

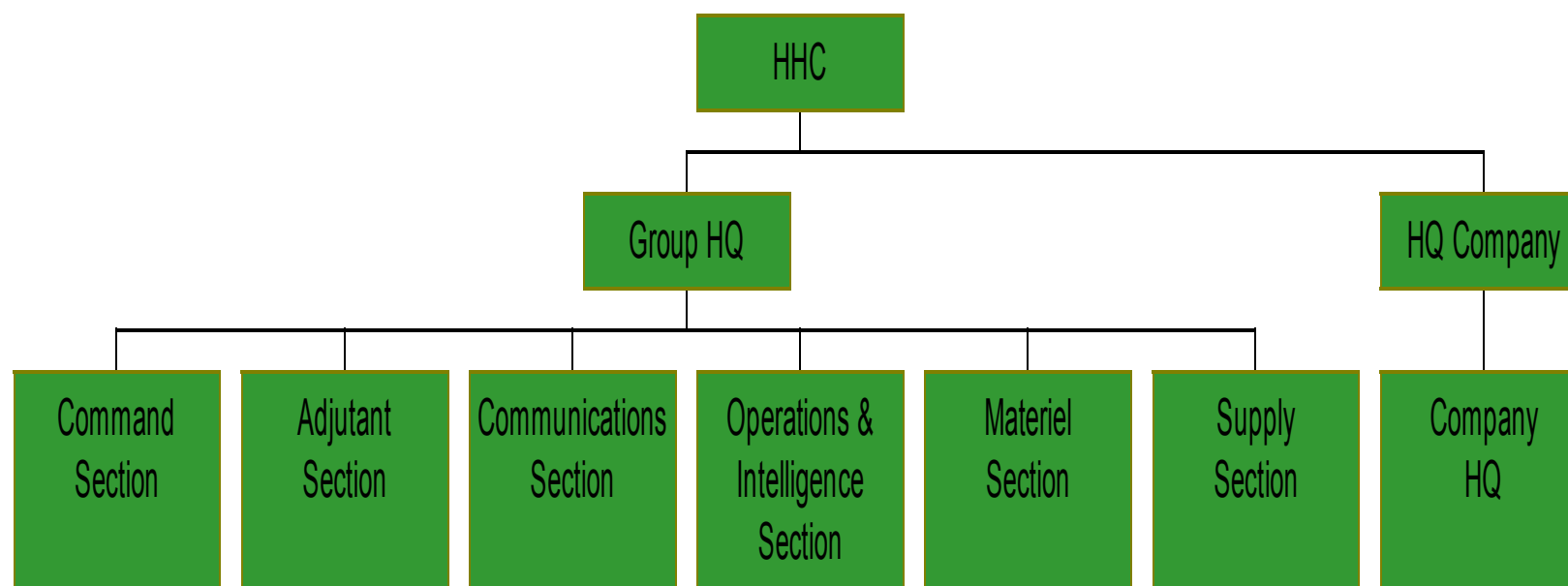


# TRANSITION TO OPERATIONS INVOLVING POTENTIAL THREAT



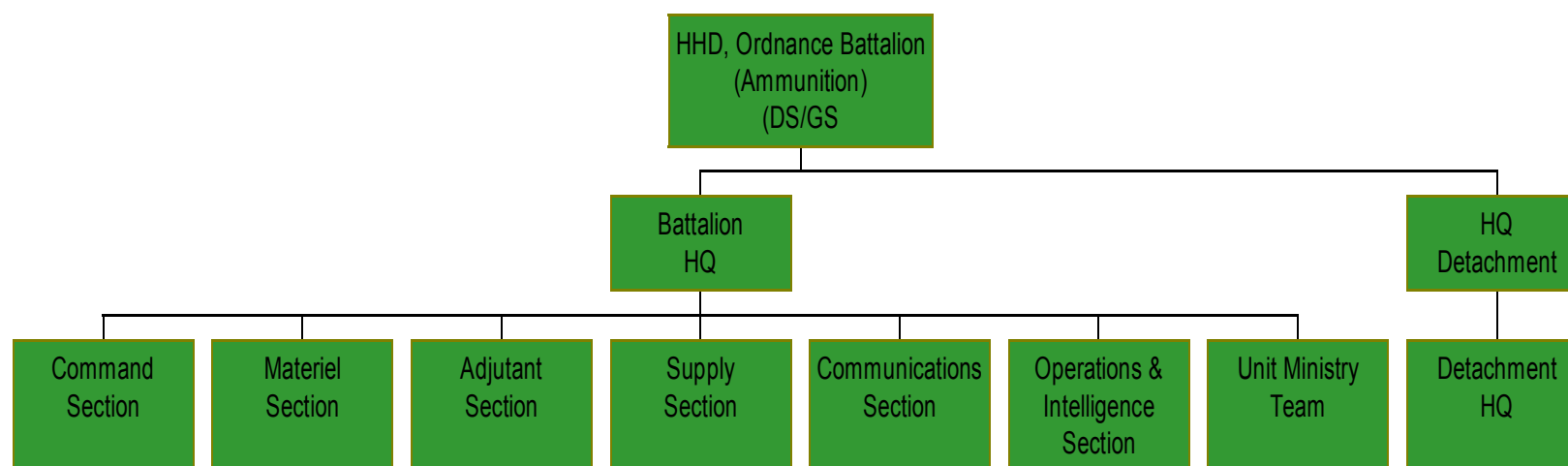


# HHC, Ordnance Group, Ammunition



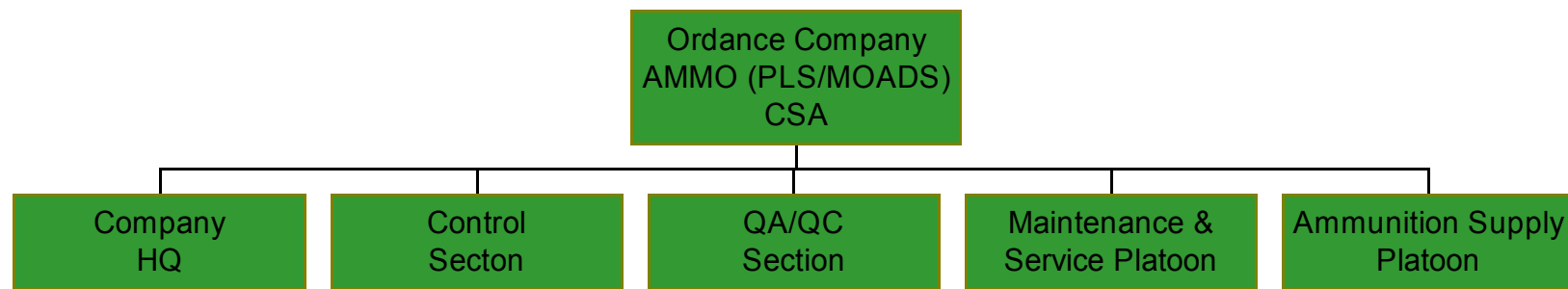


# HHD, Ordnance Battalion, DS/GS



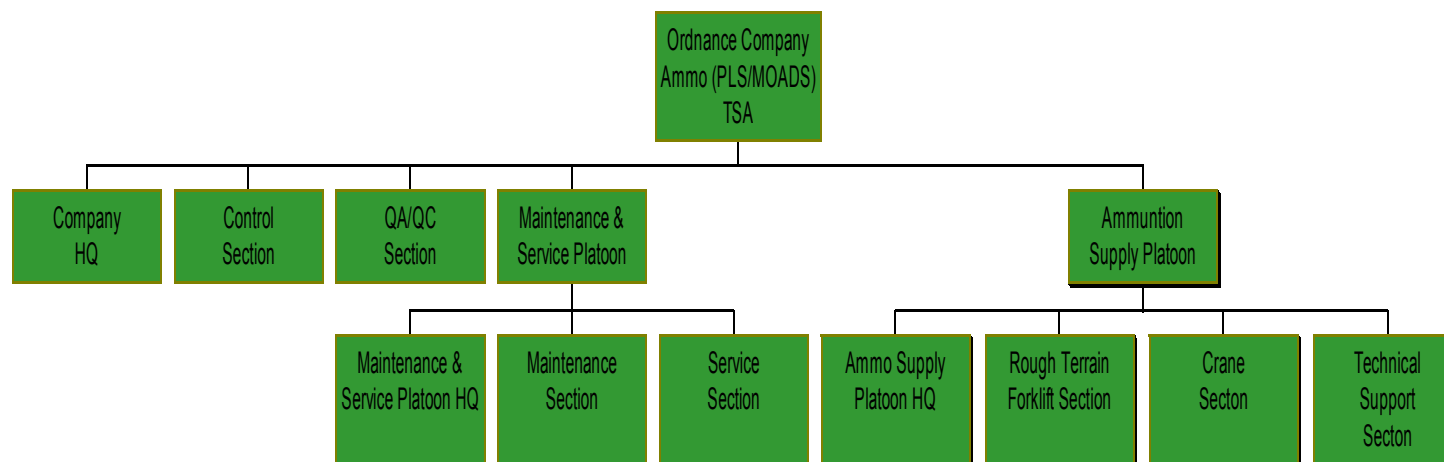


# Ordnance Company Ammo (PLS/MOADS) CSA



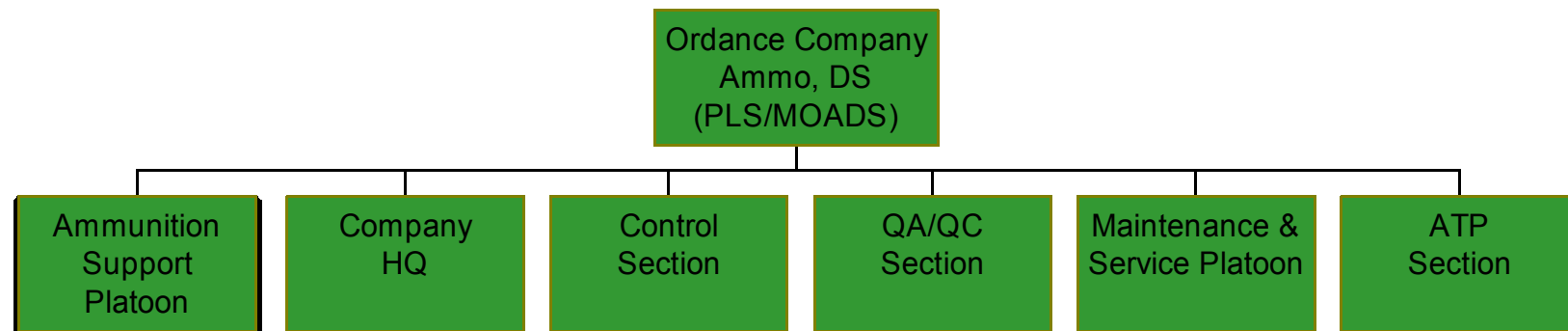


# Ordnance Company Ammo (PLS/MOADS) TSA



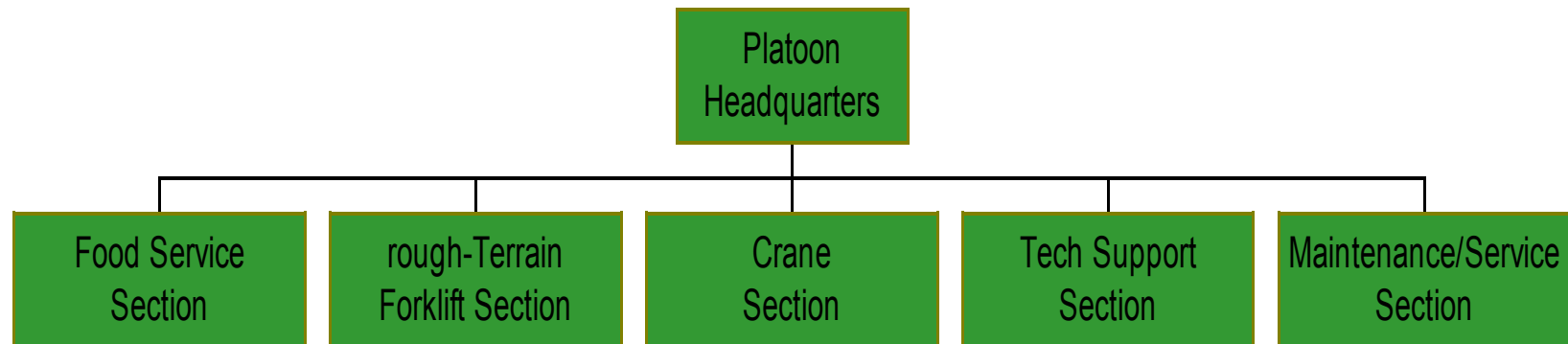


# Ordnance Company Ammo, DS (PLS/MOADS)



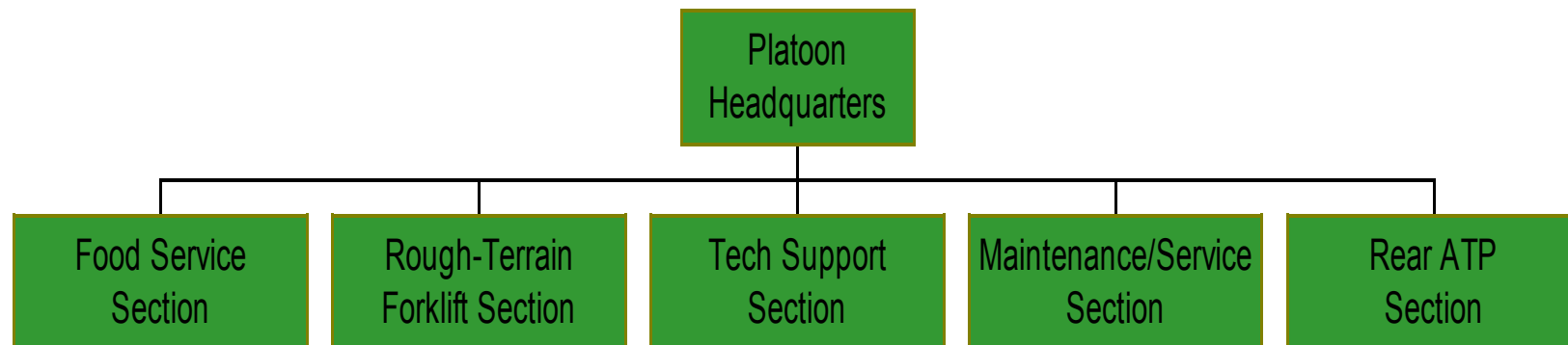


# Modular Ammunition Platoon Heavy Lift (HLP) SRC 09503LB00





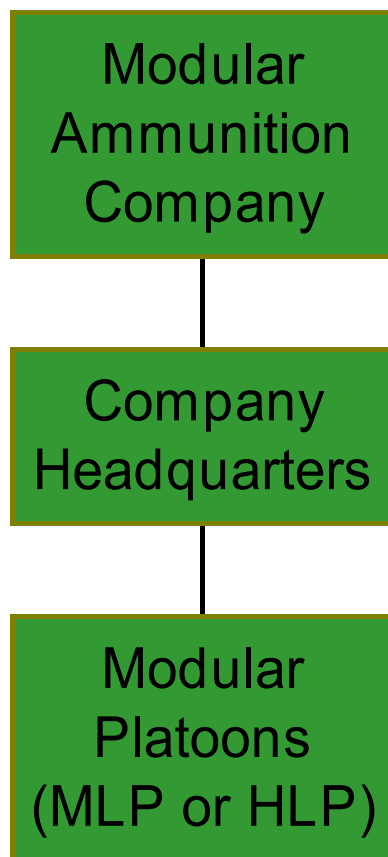
# Modular Ammunition Platoon Medium Lift (MLP) SRC 09503LA00







# Modular Ammunition Company Company Headquarters SRC 09408L000





# COMPUTING MUNITIONS REQUIREMENTS

- A = Daily theater munitions requirements.
- V = Number of lifts required by GS units.
- C = Percentage of munitions to be handled by GS units
- D = Lift capability (STONs) of a GS unit
- E = Number of GS units required in the force



## CAPSTONE DOCUMENTS

- Volume I, The Army CAPSTONE Program
- Volume II, CAPSTONE - Europe
- Volume III, CAPSTONE - Southwest Asia
- Volume IV, CAPSTONE - Pacific
- Volume V, CAPSTONE - CONUS  
Sustaining Base/Theater Defense Brigades



## PEACETIME PLANNING PHASE

- War plans data
- SOPs and area maps
- Threat information
- Deployment area and subordinate unit locations
- Host nation requirements and capabilities
- ID of theater/corps liaison team
- In-theater reception and transportation information



# SUMMARY